

BEFORE THE ILLINOIS POLLUTION CONTROL BOARD

Monier Pork Farm  
(Property Identification Number  
04-25-100-002)

)  
)  
)  
)

PCB No. \_\_ -  
(Tax Certification)

NOTICE

PLEASE TAKE NOTICE that I have today filed with the Office of the Clerk of the Pollution Control Board an APPEARANCE and RECOMMENDATION OF THE ILLINOIS ENVIRONMENTAL PROTECTION AGENCY, copies of which are herewith served upon you.

Monier Pork Farm  
Stacy Mueller  
23228 2300 North Ave.  
Ohio, Illinois 61349

Don Brown, Clerk  
Illinois Pollution Control Board  
60 E. Van Buren St., Ste. 630  
Chicago, Illinois 60605

Copies also provided electronically as follows:

Illinois Department of Revenue  
via email at REV.PropTaxApp@illinois.gov  
101 West Jefferson  
P.O. Box 19033  
Springfield, Illinois 62794

ILLINOIS ENVIRONMENTAL PROTECTION AGENCY

By: 

Gabriel Neibergall  
Assistant Counsel  
Division of Legal Counsel

DATED: July 9, 2025

Illinois Environmental Protection Agency  
2520 W Iles Ave.  
P.O. Box 19276  
Springfield, Illinois 62794-9276  
(217) 782-5544

THIS FILING IS SUBMITTED ON RECYCLED PAPER

**BEFORE THE ILLINOIS POLLUTION CONTROL BOARD**

**Monier Pork Farm**  
**(Property Identification Number**  
**04-25-100-002)**

)  
)  
)  
)

**PCB No. \_\_ -**  
**(Tax Certification)**

**A P P E A R A N C E**

The undersigned, as one of its attorneys, hereby enters an **APPEARANCE** on behalf of Respondent,  
Illinois Environmental Protection Agency.

ILLINOIS ENVIRONMENTAL PROTECTION AGENCY

By: \_\_\_\_\_



Gabriel Neibergall  
Assistant Counsel  
Division of Legal Counsel

DATED: July 9, 2025

Illinois Environmental Protection Agency  
2520 W Iles Ave.  
P.O. Box 19276  
Springfield, Illinois 62794-9276  
(217)782-5544

**BEFORE THE ILLINOIS POLLUTION CONTROL BOARD**

<b>Monier Pork Farm</b>	)	
<b>(Property Identification Number</b>	)	<b>PCB No. __ -</b>
<b>04-25-100-002)</b>	)	<b>(Tax Certification)</b>
	)	

**RECOMMENDATION OF THE ILLINOIS  
ENVIRONMENTAL PROTECTION AGENCY**

The Illinois Environmental Protection Agency ("Illinois EPA") hereby files its Recommendation pursuant to Section 125.204 of the regulations of the Illinois Pollution Control Board ("Board"), 35 Ill. Adm. Code 125.204.

1. On December 18, 2023, the Illinois EPA received a request from Stacy Mueller (Log number TC-148757, Exhibit A) for an Illinois EPA recommendation regarding the tax certification of water pollution control facilities pursuant to 35 Ill. Adm. Code 125.204.
2. The facility's address is: Monier Pork Farm  
23228 2600 North Ave.  
Ohio, Illinois 61349

The proposed water pollution control facilities in this request are located in the

NW ¼ of Section 25, T18N, R9E of the 4<sup>th</sup> P.M. in Bureau County, at the above street address and consist of the following livestock waste management structures:

One (1) concrete manure pit within Building P1 measuring 233.67 ft. (length) x 101.83 ft. (width) x 10 ft. (depth), precast concrete slatted flooring over the manure pit, all concrete columns, and precast beams supporting the floor. The manure deep pit has eight (8) pumpout pits measuring 7.17 ft. (length) x 6.67 ft. (width) x 10 ft. (depth) to allow manure removal from the pit. A PVC Form-a-Drain drainage pipe measuring 675 linear feet (length) x 2.25 in. (width) x 6 in. (height) is located around the footings to prevent flotation of the pit.

One (1) concrete manure pit within Building P2 measuring 233.67 ft. (length) x 101.83 ft. (width) x 10 ft. (depth), precast concrete slatted flooring over the manure pit, all concrete columns, and precast beams supporting the floor. The manure deep pit has eight (8) pumpout pits measuring 7.17 ft. (length) x 6.67 ft. (width) x 10 ft. (depth) to allow manure removal from the pit. A PVC Form-a-Drain drainage pipe measuring 675 linear feet (length) x 2.25 in. (width) x 6 in. (height) is located around the footings to prevent flotation of the pit.

These livestock waste management facilities are used to collect, transport and/or store livestock waste prior to cropland application.

3. Section 11-10 of the Property Tax Code, 35 ILCS 200/11-10 (2022), and Section 125.200(a) of the Board's regulations, 35 Ill. Adm. Code 125.200(a), define "pollution control facilities" as:

any system, method, construction, device or appliance appurtenant thereto or any portion of any building or equipment, that is designed, constructed, installed or operated for the primary purpose of: eliminating, preventing, or reducing air or water pollution ...or treating, pretreating, modifying or disposing of any potential solid, liquid or gaseous pollutant which if released without treatment, pretreatment modification or disposal might be harmful, detrimental or offensive to human, plant or animal life, or to property.

4. In order to receive preferential tax treatment as pursuant to 35 ILCS 200/11-5 (2022), pollution control facilities must be certified as such by the Board, 35 ILCS 200/11-20 (2022) and 35 Ill. Adm. Code 125.200(a).
5. Upon receipt of a tax certification application, the Illinois EPA must file a recommendation on the application with the Board, 35 Ill Adm. Code 125.204(a).
6. Based on the information in the application and the purpose of the facility, it is the Illinois EPA's engineering judgment that the described facilities may be considered "pollution control facilities," pursuant to 35 Ill. Adm. Code 125.200(a), with the primary purpose of eliminating, preventing, or reducing water pollution, or as otherwise provided in 35 Ill. Adm. Code 125.200, and are eligible for tax certification from the Board.

WHEREFORE, the Illinois EPA recommends that the Board issue the requested tax certification.

ILLINOIS ENVIRONMENTAL PROTECTION AGENCY

By:



Gabriel Neibergall  
Assistant Counsel  
Division of Legal Counsel

Dated: July 9, 2025

Illinois Environmental Protection Agency  
2520 W Iles Ave.  
P.O. Box 19276  
Springfield, Illinois 62794-9276  
217/782-5544



## ILLINOIS ENVIRONMENTAL PROTECTION AGENCY

2520 WEST ILES AVENUE, P.O. BOX 19276, SPRINGFIELD, ILLINOIS 62794-9276 • (217) 782-3397

JB PRITZKER, GOVERNOR

JAMES JENNINGS, ACTING DIRECTOR

### Memorandum

To: Mike Roubitchek, Division of Legal Counsel

From: Darin LeCrone, P.E., Manager, Permit Section, Division of Water Pollution Control, Illinois Environmental Protection Agency

Date: MAY 14 2025<sup>1</sup>

Re: Monier Pork Farm - Ohio  
Recommendation of Tax Certification  
Log No.: TC-148757  
BOW ID No.: W0118180005  
Property Index Number(s): 04-25-100-002

The Bureau of Water received a request on 12/18/2023 from Stacy Mueller, having a principal place of business at 23228 2300 North Ave, Ohio, IL 61349, for an Illinois EPA recommendation regarding the tax certification of water pollution control facilities pursuant to 35 Ill. Adm. Code 125.204. We offer the following recommendation.

The water pollution control facilities in this request include the following:

Monier Pork Farm  
23228 2600 North Avenue  
Ohio, IL 61349

NW ¼ of Section 25, T18N, R9E, of the 4<sup>th</sup> Principal Meridian in Bureau County

Livestock waste handling facilities consist of:

One (1) concrete manure pit within Building P1 measuring 233.67 ft. (length) x 101.83 ft. (width) x 10 ft. (depth), precast concrete slatted flooring over the manure pit, all concrete columns, and precast beams supporting the floor. The manure deep pit has eight (8) pumpout pits measuring 7.17 ft. (length) x 6.67 ft. (width) x 10 ft. (depth) to allow manure removal from the pit. A PVC Form-a-Drain drainage pipe measuring 675 linear feet (length) x 2.25 in. (width) x 6 in. (height) is located around the footings to prevent flotation of the pit.

One (1) concrete manure pit within Building P2 measuring 233.67 ft. (length) x 101.83 ft. (width) x 10 ft. (depth), precast concrete slatted flooring over the manure pit, all concrete columns, and precast beams supporting the floor. The manure deep pit has eight (8) pumpout pits measuring 7.17 ft. (length) x 6.67 ft. (width) x 10 ft. (depth) to allow manure removal from the pit. A PVC Form-a-Drain drainage pipe measuring 675 linear feet (length) x 2.25 in. (width) x 6 in. (height) is located around the footings to prevent flotation of the pit.

These livestock waste management facilities collect, transport, and/ or store livestock waste prior to cropland application.

2125 S. First Street, Champaign, IL 61820 (217) 278-5800  
115 S. LaSalle Street, Suite 2203, Chicago, IL 60603  
1101 Eastport Plaza Dr., Suite 100, Collinsville, IL 62234 (618) 346-5120  
9511 Harrison Street, Des Plaines, IL 60016 (847) 294-4000

595 S. State Street, Elgin, IL 60123 (847) 608-3131  
2309 W. Main Street, Suite 116, Marion, IL 62959 (618) 993-7200  
412 SW Washington Street, Suite D, Peoria, IL 61602 (309) 671-3022  
4302 N. Main Street, Rockford, IL 61103 (815) 987-7760

Page No. 2

Tax Certification Recommendation

Log No. TC-148757

The facilities are further described in the enclosed applications and supporting documents.

Based on the information included in this submittal, it is our engineering judgment that the above proposed facilities may be considered "Pollution Control Facilities" under 35 Ill. Adm. Code 125.200(a), with the primary purpose of eliminating, preventing, or reducing water pollution, or as otherwise provided in this

section, and therefore eligible for tax certification from the Illinois Pollution Control Board. The Bureau of Water therefore recommends that the Board issue the requested tax certification for these facilities.

If you have any questions regarding this letter, please contact Sarah Coulton at 217/782-0610.

SC:TC-148757\_Tax Cert Recommendation\_12Mar25.docx

cc: Tax Cert File  
Todd Bennett

Illinois EPA - Bureau of Water - Division of Pollution Control

Title 35 Subtitle A Part 125 Tax Certifications

Illinois EPA Review Notes for:

Agency Recommendation of Pollution Control Facilities.

---

**BOW ID #:** W0118180005

**Project Name:** Monier Pork Farm

**Date application received:** 12/18/2023

**Reviewer:** SC

**Log number:** TC-148757

**Legal Description:**

NW 25 ¼ Section Twp: 18N Range: 9E 4<sup>th</sup> PM

**County:** Bureau

**Facility Contact:** Daniel Feucht  
3116 N Dries Lane, STE: 100

**Phone:** 309-693-7615  
dnfeucht@mstutz.com

**Pollution Control Facility Type:**

Swine Livestock Waste Management Facility

**Property ID:** 04-25-100-002

**Applicant:** Stacy Mueller  
23228 2300 North Ave  
Ohio, IL 61349

**Facility:** Monier Pork Farm  
23228 2600 North Ave,  
Ohio, IL 61349

**Date Control Devices installed:** 11/30/2023

**Application Signature by:** Stacy Mueller

**Title:** Owner

Contents of Application: Application forms, pollution control diagram, specs, maps

Is there a pollutant control flow diagram? **Yes**

Is there sufficient diagrams showing the pollution control facilities? **Yes**

**This facility generates the following pollutants and prevents their discharge as indicated:**

**Livestock waste is collected and land applied to cropland.**

**Physical description of pollution control facilities that ARE recommended:**

The livestock waste handling facilities consist of two (2) concrete manure deep pits (approximately 233.67 ft. x 101.83 ft. x 10 ft.) and precast concrete slatted flooring over the manure pits. The manure deep pits both have eight (8) pumpout pits (approximately 7.17 ft. x 6.67 ft. x 10 ft.) to allow manure removal from the pit. The recessed sump area for each pit is 4.67 ft. x 8.25 ft. x 11 ft. Both pits have a PVC perimeter drain (approximately 675 ft. x 6 in. x 2.25 in.) to prevent flotation of the pit.

The facility collects, transports and stores livestock waste prior to cropland application.

Pollution control facilities requested by the Applicant through Description of Pollution Control Facilities, Section 2 of the application form and the attachments:

Two (2) concrete manure pits,  
Precast concrete slatted floor,



Illinois EPA Log #: TC-148757

Page 2 of 2

Sixteen (16) pumpout pits,  
Two (2) sump pit areas,  
Two (2) PVC perimeter drains,

A process flow diagram with narrative is provided by the attachment of the application.

Recommended Action: Issue tax certification.

**In addition to the above described facilities, the Agency determined that the following facilities ARE NOT pollution control facilities according to § 125.200 having the primary purpose of eliminating, preventing, or reducing air or water pollution or treating, pretreating, modifying or disposing of any potential solid, liquid or gaseous pollutant which if released without pretreatment, treatment, modification or disposal might be harmful, detrimental or offensive to human, plant or animal life, or to property and therefore ARE NOT recommended.**

Not applicable.

**Notes:**

**Nothing follows – SC - (March 5, 2025)**

**Coulton, Sarah N.**

---

**From:** Daniel N. Feucht <dnfeucht@mstutz.com>  
**Sent:** Tuesday, March 4, 2025 4:18 PM  
**To:** Coulton, Sarah N.  
**Subject:** [External] RE: Tax Certification Log No. TC-148757 Add'l Information Required

The perimeter drain is rectangular in shape. The dimensions are 2.25" x 6". It is made of PVC material, called form-a-drain.

Thanks,

Daniel

**From:** Coulton, Sarah N. <Sarah.Coulton@Illinois.gov>  
**Sent:** Tuesday, March 4, 2025 3:06 PM  
**To:** Daniel N. Feucht <dnfeucht@mstutz.com>  
**Subject:** Tax Certification Log No. TC-148757 Add'l Information Required

Good afternoon, Daniel,

I am in the process of reviewing the tax certification application (Log No. TC-148757) for Monier Pork Farm in Ohio, IL that was received by the agency on 12/18/23. Please provide me with the material and diameter of the perimeter drain that was laid around each deep pit. It looks like they both measure 675 ft. in length.

Once I receive this information, I will continue my review.

Sincerely,  
Sarah

---

**Sarah Coulton**  
Environmental Protection Specialist  
Industrial, 401/Mines Sub-Unit, Permit Section, Division of Water Pollution Control  
Illinois Environmental Protection Agency, Bureau of Water  
2520 West Iles  
Springfield, IL 62794-9276  
[Sarah.Coulton@illinois.gov](mailto:Sarah.Coulton@illinois.gov)  
Telephone: (217) 785-7428

State of Illinois - CONFIDENTIALITY NOTICE: The information contained in this communication is confidential, may be attorney-client privileged or attorney work product, may constitute inside information or internal deliberative staff communication, and is intended only for the use of the addressee. Unauthorized use, disclosure or copying of this communication or any part thereof is strictly prohibited and may be unlawful. If you have received this communication in error, please notify the sender immediately by return e-mail and destroy this communication and all copies thereof, including all attachments. Receipt by an unintended recipient does not waive attorney-client privilege, attorney work product privilege, or any other exemption from disclosure.



# Illinois Environmental Protection Agency

1021 North Grand Avenue East • P.O. Box 19276 • Springfield • Illinois • 62794-9276 • (217) 782-3397

## Division of Water Pollution Control Tax Certification Form for Livestock Operations

This form's purpose is for the application for tax certification of water pollution control facilities at a livestock operation in accordance with 35 Ill. Admin. Code Part 125. For purposes of this form, a water pollution control facility ("facility") is designed, constructed, installed or operated for the primary purpose of eliminating, preventing, or reducing water pollution. Multiple facilities may be submitted using this form; however, all facilities must be located on the same livestock operation site. Separate applications must be completed for separate livestock operations.

All other types of operations (e.g. industrial, agrichemical, etc.) and air pollution control facilities must use form IL 532-0222 APC 151 (Application for Certification (Property Tax Treatment) Pollution Control Facility).

Please follow the instructions found throughout this form. If you need additional assistance with filling out this form, please call the Bureau of Water at 217-782-3362. Additional information about the tax certification process and applicable regulations including definitions may be found at the Agency website: [www2.illinois.gov/epa/topics/forms/water-permits/tax-certification](http://www2.illinois.gov/epa/topics/forms/water-permits/tax-certification).

### I. Applicant Information

Company: Monier Pork Farm

#### Person Authorized to Receive Certification

Name: Stacey Mueller

Street Addr: 23228 2300 North Ave.

City: Ohio State: IL ZIP: 61349

Phone: 309-292-6291 ext: \_\_\_\_\_

Email: muellerstacey74@gmail.com

#### Person to Contact for Additional Details

Name: Daniel Feucht

Street Addr: 3116 N Dries Lane, STE:100

City: Peoria State: IL ZIP: 61614

Phone: 309-693-7615 ext: \_\_\_\_\_

Email: dnfeucht@mstutz.com

### II. Livestock Operation Information

#### Site Location

The location of the parcel of land where the facilities are located and given by quarter section, township, range and county must be provided. The Public Land Survey System information is available on county plat maps or at [www.isgs.illinois.edu/plss](http://www.isgs.illinois.edu/plss). A plat map location is requested for facilities located outside of municipal boundaries.

Quarter Section: NW - 25 Township: 18N Range: 9-E Prime Meridian: 4th County: Bureau

Municipality Name: \_\_\_\_\_ Township Name: Ohio

Street Address: 23228 2600 N Ave. City: Ohio State: IL ZIP: 61349

Property Index Number(s): 04-25-100-002

A property index number (PIN) for the parcel of land where pollution control facilities are located is required. If multiple PINs are applicable to the requested facilities, you must identify all applicable PINs in the above line and in Section III below. If you do not know your PIN you may obtain it from your records or your County's tax assessors website which may be found on the Illinois Department of Revenue website at [www2.illinois.gov/rev/Individuals/Pages/IllinoisCounties.aspx](http://www2.illinois.gov/rev/Individuals/Pages/IllinoisCounties.aspx).

**Livestock Activities:** Provide descriptions of the livestock operations including type of animals at the site. (Text box will expand.)

Swine livestock farm.

**Pollutant Sources:** Identify potential sources of water pollution that are being controlled (i.e., beef feedlot runoff, swine manure, silage leachate, etc.). Provide estimated quantities of each pollutant that is produced in gallons per year. (Text box will expand.)

Swine manure - est. 2,800,000 gallons annually

**RECEIVED**  
DEC 18 2023

Are the pollutants collected by the facility land applied?

☒ Yes ☐ No

If No, provide a description of the final disposition of the pollutants which are collected by the facility.

**III. Pollution Control Facility Information**

Applicant must ensure each requested pollution control facility is represented accurately in both Part A and Part B of this Section.

**Part A. Operational Diagram**

Using the space provided below or on a separate sheet of paper, provide a plan sketch or map of the livestock operation scaled to show the location and layout of all the requested facilities. All requested facilities must be clearly identified on this diagram. Each facility should be labeled with the pollution control facility number identified in Part B of this Section and primary dimensions to help distinguish between other requested facilities. Please include labels of roadways, downstream waterways, other important landmarks and a north seeking arrow.

☒ Check this box if the required diagram was completed on a separate sheet and attached to this application.**Part B. Pollution Control Facility Data**

For each separate requested pollution control facility in this application, provide written or typed responses to all of the following questions. Use the button below the questions to add blank questions for each additional requested facility.

**Pollution Control Facility Number 2**Name of pollution control facility: P1 - Swine Deep Pit Barn (West 2023 Barn)

Provide a physical description including all pertinent dimensions (length, width, depth, diameter), construction materials (e.g. steel, HDPE, concrete block, etc.), and rating (e.g. 10 HP centrifugal pump). (Text box will expand.)

The building identified as P1 is a 233'-8" x 101'-10" x 10ft deep pit that consists of a 4" thick base slab and 10" thick pit walls. Precast concrete slotted floors enable excreta and wastewater to fall through and accumulate in the below floor pits. The end walls have footings that are 9" thick and 1'-6" wide. The side walls have footings that are 9" thick and 2'-0" wide. The center divider wall has a footing that is 9" thick and 2'-6" wide. Columns within the pit are 14" in diameter, 9'-2" tall and supported by 33"x33" square footings. The columns support 8"x10"x12ft long precast concrete floor beams. The floor beams support a 4" thick precast concrete slotted gang slat floor. The barn has 8 pumpout pits. Each pumpout pit is 7'-2" x 6'-8" with 10" thick walls. Footings around the pumpout pit walls measure 20" wide by 16" inches thick. The recessed sump area is 4'-8" x 8'-3" x 11" deep. The pumpouts collect manure and allow manure transfer through a hose to be pumped for field application. A perimeter drain is used to control the seasonal high water table. The total length of perimeter drain is 675 ft.

Is the requested facility used 100 percent for elimination, prevention, or reduction of water pollution? ☒ Yes ☐ No

If No, list all other uses of the facility and provide a use-percentage estimate for each of those other uses.

Original cost of the pollution control facility: 600,000Date of installation or status of installation: 11-30-2023Property Index Number (PIN): 04-25-100-002Applicable Illinois EPA permit number(s): N/AAre supplemental diagrams or construction drawings for this pollution control facility attached to the application? ☒ Yes ☐ No

If Yes, please label the diagram with the specific pollution control facility number identified above.

**Pollution Control Facility Number 2**Name of pollution control facility: P2 - Swine Deep Pit Barn (East 2023 Barn)

Provide a physical description including all pertinent dimensions (length, width, depth, diameter), construction materials (e.g. steel, HDPE, concrete block, etc.), and rating (e.g. 10 HP centrifugal pump). (Text box will expand.)

The building identified as P2 is a 233'-8" x 101'-10" x 10ft deep pit that consists of a 4" thick base slab and 10" thick pit walls. Precast concrete slotted floors enable excreta and wastewater to fall through and accumulate in the below floor pits. The end walls have footings that are 9" thick and 1'-6" wide. The side walls have footings that are 9" thick and 2'-0" wide. The center divider wall has a footing that is 9" thick and 2'-6" wide. Columns within the pit are 14" in diameter, 9'-2" tall and supported by 33"x33" square footings. The columns support 8"x10"x12ft long precast concrete floor beams. The floor beams support a 4" thick precast concrete slotted gang slat floor. The barn has 8 pumpout pits. Each pumpout pit is 7'-2" x 6'-8" with 10" thick walls. Footings around the pumpout pit walls measure 20" wide by 16" inches thick. The recessed sump area is 4'-8" x 8'-3" x 11" deep. The pumpouts collect manure and allow manure transfer through a hose to be pumped for field application. A perimeter drain is used to control the seasonal high water table. The total length of perimeter drain is 675 ft.

Is the requested facility used 100 percent for elimination, prevention, or reduction of water pollution? ☒ Yes ☐ No

If No, list all other uses of the facility and provide a use-percentage estimate for each of those other uses.

Original cost of the pollution control facility: 600,000Date of installation or status of installation: 11-30-2023Property Index Number (PIN): 04-25-100-002Applicable Illinois EPA permit number(s): N/AAre supplemental diagrams or construction drawings for this pollution control facility attached to the application? ☒ Yes ☐ No

If Yes, please label the diagram with the specific pollution control facility number identified above.

**IV. Discharge Point Locations and Receiving Waters**

Provide a written description of the surface water drainage characteristics of the operation which may convey wastewater or polluted stormwater runoff from the facility to downstream waterways. Identify the location(s) on the property at which runoff or surface discharge leaves the property.

Building site has gentle slope to the south. Runoff flows into waterway which flows into an unnamed tributary of Masters Creek South/West of Farm.

Identify local ditches, streams, rivers, ponds or lakes that may receive wastewater or polluted stormwater runoff from the operation. Also identify any named waterways that are immediately downstream from the local waterway.

UN-named tributary to Master's Creek (West) - immediately downstream of farm.  
Master's Creek (South)

**V. Approvals of Application and Signature**

The information on this form and attachments is submitted in accordance with the Illinois Property Tax Code, as amended, and to the best of my knowledge is true and correct.

Any person who knowingly makes a false, fictitious, or fraudulent material statement, orally or in writing, to the Illinois EPA commits a Class 4 felony. A second or subsequent offense after conviction is a Class 3 felony. (415 ILCS 5/44(h))

Stacey Mueller  
Printed Name

Owner  
Title

[Signature]  
Signature

12-14-23  
Date

**VI. Submittal of Your Application**

**Completing this Form:** The absence of information requested in this form may result in denial of your application for tax certification. If information is omitted, Agency staff will determine when and if such information or data is essential and may contact you to obtain this information to complete its review. This application form may be completed and stored locally in electronic form for future printing. Electronic submittal or email submittal of this form is not authorized. If handwritten, the form must be legibly completed.

**Attachments:** Please only send attachments on 8.5" x 11" paper, do not send 11" x 17" sheets.

Please mail the completed and signed form and necessary attachments to:

Illinois Environmental Protection Agency  
Division of Water Pollution Control, Mail Code #15  
Attention: Permit Section  
1021 North Grand Avenue East  
P.O. Box 19276  
Springfield, Illinois 62794-9276

Application for Certification (Property Tax Treatment) Pollution Control Facility  
Monier Pork  
By: Maurer-Stutz, Inc

**ATTACHMENT 1: Facility Pollution Control Facility Description**

The farm consists of the following swine buildings and storage structures:

P1	101'-10" x 233'-8" x 10'-0"	Deep pit below slats concrete storage pit
P2	101'-10" x 233'-8" x 10'-0"	Deep pit below slats concrete storage pit

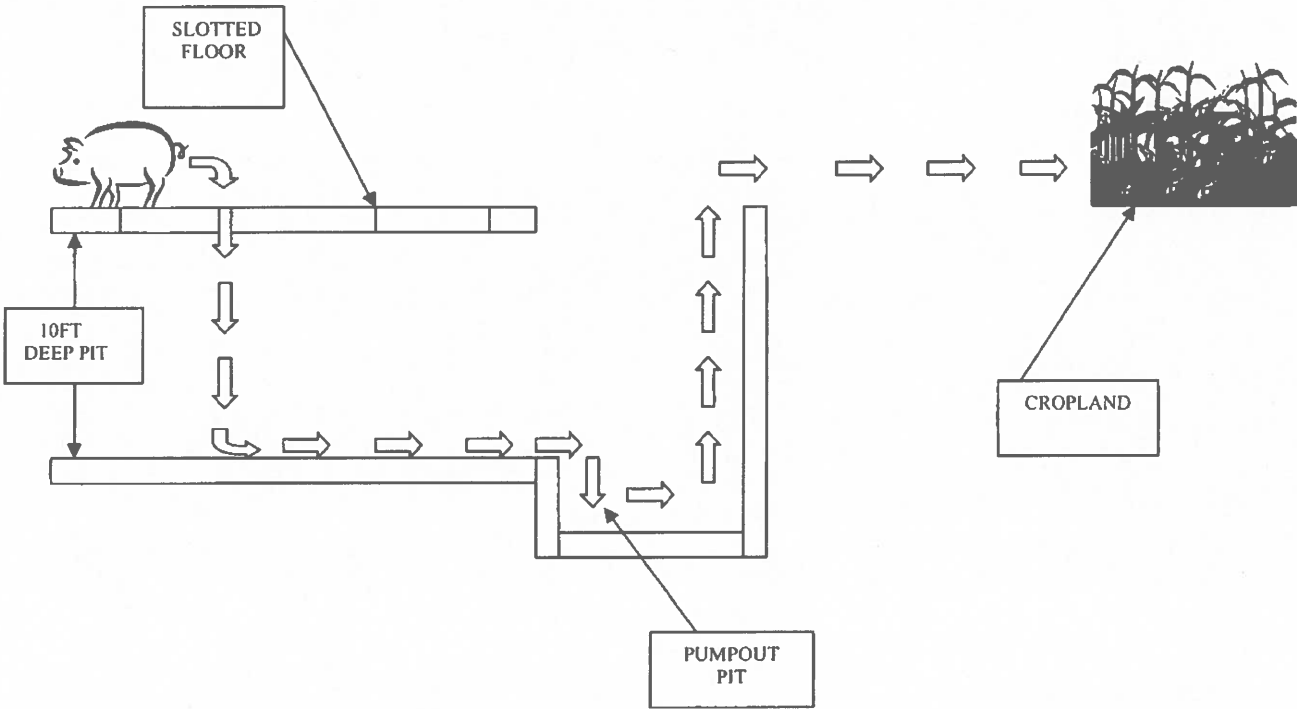
The building identified as P1 is a 233'-8" x 101'-10" x 10ft deep pit that consists of a 4" thick base slab and 10" thick pit walls. Precast concrete slotted floors enable excreta and wastewater to fall through and accumulate in the below floor pits. The end walls have footings that are 9" thick and 1'-6" wide. The side walls have footings that are 9" thick and 2'-0" wide. The center divider wall has a footing that is 9" thick and 2'-6" wide. Columns within the pit are 14" in diameter, 9'-2" tall and supported by 33"x33" square footings. The columns support 8"x10"x12ft long precast concrete floor beams. The floor beams support a 4" thick precast concrete slotted gang slat floor. The barn has 8 pumpout pits. Each pumpout pit is 7'-2" x 6'-8" with 10" thick walls. Footings around the pumpout pit walls measure 20" wide by 16" inches thick. The recessed sump area is 4'-8" x 8'-3" x 11" deep. The pumpouts collect manure and allow manure transfer through a hose to be pumped for field application. A perimeter drain is used to control the seasonal high water table. The total length of perimeter drain is 675 ft.

The building identified as P2 is a 233'-8" x 101'-10" x 10ft deep pit that consists of a 4" thick base slab and 10" thick pit walls. Precast concrete slotted floors enable excreta and wastewater to fall through and accumulate in the below floor pits. The end walls have footings that are 9" thick and 1'-6" wide. The side walls have footings that are 9" thick and 2'-0" wide. The center divider wall has a footing that is 9" thick and 2'-6" wide. Columns within the pit are 14" in diameter, 9'-2" tall and supported by 33"x33" square footings. The columns support 8"x10"x12ft long precast concrete floor beams. The floor beams support a 4" thick precast concrete slotted gang slat floor. The barn has 8 pumpout pits. Each pumpout pit is 7'-2" x 6'-8" with 10" thick walls. Footings around the pumpout pit walls measure 20" wide by 16" inches thick. The recessed sump area is 4'-8" x 8'-3" x 11" deep. The pumpouts collect manure and allow manure transfer through a hose to be pumped for field application. A perimeter drain is used to control the seasonal high water table. The total length of perimeter drain is 675 ft.

The facility protects ground and surface water by providing collection and storage of livestock waste for about 365 days. Subsequently, the waste will be applied agronomically to cropland under proper soil and weather conditions for safe use.

Application for Certification (Property Tax Treatment) Pollution Control Facility  
Monier Pork  
By: Maurer-Stutz, Inc

MANURE DIAGRAM





Application for Certification (Property Tax Treatment) Pollution Control Facility  
Monier Park  
By: Maurer-Stutz, Inc

**ATTACHMENT 2: Purpose of Pollution Control Facility**

The primary purpose of the facilities is to provide collection and storage for the manure until it can be properly land applied to cropland at agronomic rates.

**ATTACHMENT 3: Date of First Service**

The pollution control facility was constructed in 2023, being placed into service in December 2023.

**ATTACHMENT 4: Status of Installation**

Facilities described in Attachment 1 are fully constructed and in service as of November 30, 2023.

Aerial Map



**MAURER-STUTZ**  
ENGINEERS & SURVEYORS

Mapa Provided By:  
**surety**  
CUSTOMIZED ONLINE MAPPING  
© AgriData, Inc. 2023 [www.AgrDataInc.com](http://www.AgrDataInc.com)

Boundary Center: 41.520396, -89.408119

**25-18N-9E**  
**Bureau County**  
**Illinois**

0ft 1204ft 2409ft



9/12/2023

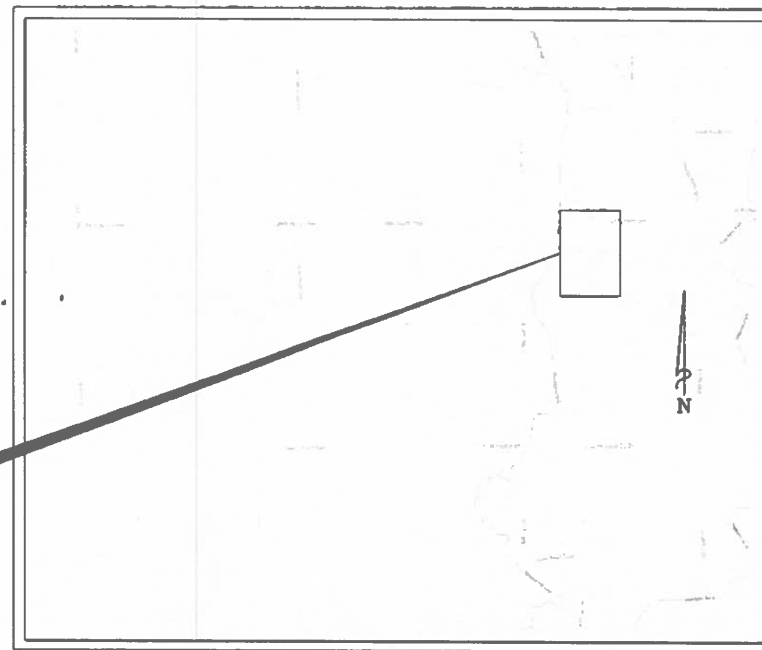
Field borders provided by Farm Service Agency as of 5/21/2023

## BUREAU COUNTY, ILLINOIS

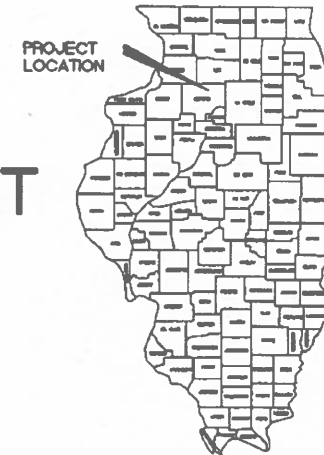
	COVER SHEET
C101	FARMSTEAD PLAN
C102	SITE PLAN
C103	GRADING PLAN
C501	GENERAL NOTES AND DRAINAGE DETAIL
S001	GENERAL STRUCTURAL NOTES
S002	GENERAL STRUCTURAL DETAILS
S101	PIT PLAN VIEW
S301	PIT SECTIONS
S501	PIT WALL AND COLUMN DETAILS
S505	PIT PUMPOUT DETAILS
S705	PRECAST FLOOR MEMBERS - MODSLAT



NW 1/4, SEC 25  
T. 18N., R. 9E., 4TH P.M.  
BUREAU COUNTY



### PROJECT SITE



BRYAN A. SWANSON, PR. SE  
SE NO. 081-008718  
EXP DATE 11/30/2024

SHEETS COVERED BY THIS SEAL 5001-5706



CAYLE C. BAKER, PE  
PE NO. 082-088052  
EXP. DATE 11/30/2023

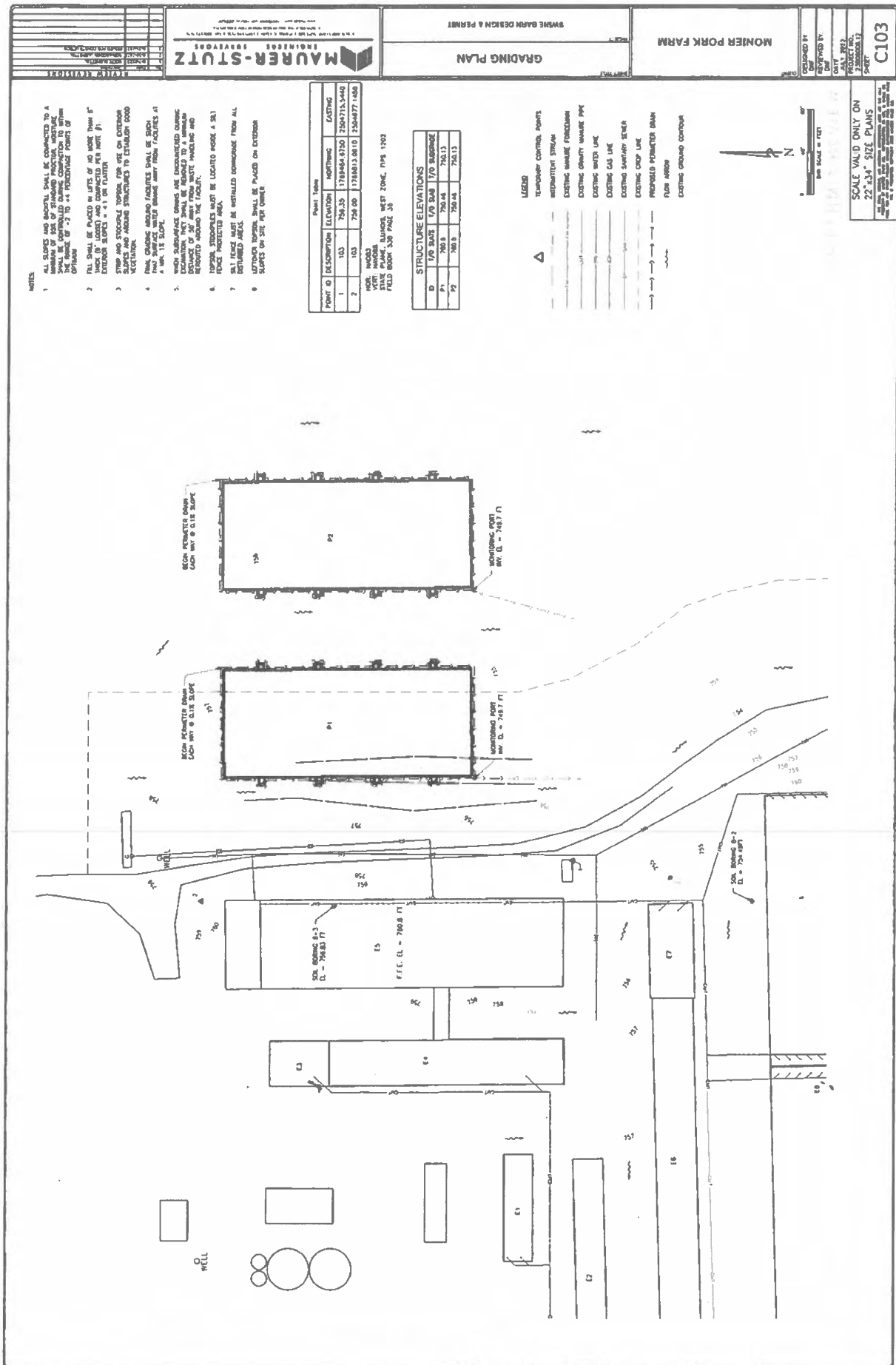
SHEETS COVERED BY THIS SEAL: C101-C301

PLANS PREPARED BY:



MSI PROJECT NO. 23806006.12





**GENERAL NOTES**

- THE CONTRACTOR SHALL BE RESPONSIBLE FOR INSPECTING UTILITY PROPERTY FROM CONSTRUCTION OPERATIONS AS A MAJOR APPROVED BY THE UTILITY OWNER.
- UTILITIES LOCATED IN THE PUBLIC RIGHT OF WAY WITH THE RESPECTIVE UTILITY OWNER(S) WHEN EXAMINING UNDER EXISTING UTILITIES, CONTRACTOR SHALL SUPPORT THE EXISTING UTILITIES AND MAINTAIN THEM IN PLACE. CONTRACTOR SHALL MAINTAIN ACCESS TO ALL UTILITIES TO REMAIN IN PLACE. CONTRACTOR MAY USE FLAMMABLE FILL IN lieu of SELECT GRANULAR FILL, BUT NO ADDITIONAL COMPENSATION WILL BE ALLOWED.
- WHEN EXAMINING UNDER EXISTING UTILITIES, CONTRACTOR SHALL SUPPORT THE EXISTING UTILITIES AND MAINTAIN THEM IN PLACE. CONTRACTOR SHALL MAINTAIN ACCESS TO ALL UTILITIES TO REMAIN IN PLACE. CONTRACTOR MAY USE FLAMMABLE FILL IN lieu of SELECT GRANULAR FILL, BUT NO ADDITIONAL COMPENSATION WILL BE ALLOWED.
- WHEN EXAMINING UNDER EXISTING UTILITIES, CONTRACTOR SHALL SUPPORT THE EXISTING UTILITIES AND MAINTAIN THEM IN PLACE. CONTRACTOR SHALL MAINTAIN ACCESS TO ALL UTILITIES TO REMAIN IN PLACE. CONTRACTOR MAY USE FLAMMABLE FILL IN lieu of SELECT GRANULAR FILL, BUT NO ADDITIONAL COMPENSATION WILL BE ALLOWED.
- THE CONTRACTOR SHALL NOTIFY THE APPROPRIATE AGENCIES PRIOR TO REMOVAL AND/OR JACKING UNDER EXISTING UTILITIES. UTILITY AND TOWNSHIP RECORDS, OR STATE HIGHWAYS DEPARTMENT RECORDS, SHALL BE MAINTAINED AND MAINTAINED IN PLACE. CONTRACTOR SHALL MAINTAIN ACCESS TO ALL UTILITIES TO REMAIN IN PLACE. CONTRACTOR MAY USE FLAMMABLE FILL IN lieu of SELECT GRANULAR FILL, BUT NO ADDITIONAL COMPENSATION WILL BE ALLOWED.
- PRIVATE OWNERS SHALL NOT BE COMPLETELY CLOSED WITHOUT 24 HOUR PRIOR NOTIFICATION of adjacent owner.
- UTILITIES SHALL BE MAINTAINED IN PLACE AND MAINTAINED IN PLACE. CONTRACTOR SHALL MAINTAIN ACCESS TO ALL UTILITIES TO REMAIN IN PLACE. CONTRACTOR MAY USE FLAMMABLE FILL IN lieu of SELECT GRANULAR FILL, BUT NO ADDITIONAL COMPENSATION WILL BE ALLOWED.

**REINFORCE TUBING NOTES:**

- PERFORATIONS SHALL BE A MINIMUM OF 1/4" IN P.A. /
- SLOTTED PERFORATIONS SHALL NOT EXCEED 1/8" /
- ROUND PERFORATIONS SHALL NOT EXCEED 1/4" IN /
- TUBING SHALL MEET ASTM F-405 (1" - 8") OR ASTM F-407 (8" - 24") AND APPROVED /
- TUBING SHALL BE PLACED AROUND EXISTING REINFORCED /
- TOP OF TUBING SHALL BE AT OR BELOW TOP OF PI /
- TUBING SHALL BE WITHIN 7' OF /
- MINIMUM BENDING THICKNESS AROUND TUBING SHALL BE 3-MINIMUM /

**SUBSURFACE DRAIN TUBING SIZE/LENGTH CHART**

TUBING SIZE	MAXIMUM LENGTH
4"	500'
6"	1000'
8"	1500'
10"	2000'
12"	2500'

**NOTE:**  
CHANGE TO NEXT LARGER PIPE SIZE BEFORE MAXIMUM LENGTH IS REACHED. IF EXISTING TUBING IS DAMAGED, REPLACE WITH LARGER SIZE. IF EXISTING TUBING IS DAMAGED, REPLACE WITH LARGER SIZE. IF EXISTING TUBING IS DAMAGED, REPLACE WITH LARGER SIZE.

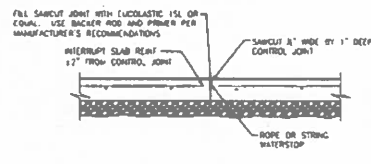
**MONITORING PORT DETAIL**

**MONITORING PORT DETAIL**

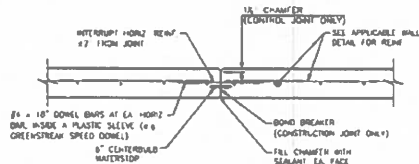
1. 12" x 12" x 1/2" MONITORING PORT  
2. MONITOR PORTER REMAINS IN ACCORDANCE WITH 8 IN. 100.111  
3. 12" x 12" x 1/2" MONITORING PORT  
4. 12" x 12" x 1/2" MONITORING PORT  
5. 12" x 12" x 1/2" MONITORING PORT  
6. 12" x 12" x 1/2" MONITORING PORT  
7. 12" x 12" x 1/2" MONITORING PORT  
8. 12" x 12" x 1/2" MONITORING PORT  
9. 12" x 12" x 1/2" MONITORING PORT  
10. 12" x 12" x 1/2" MONITORING PORT  
11. 12" x 12" x 1/2" MONITORING PORT  
12. 12" x 12" x 1/2" MONITORING PORT  
13. 12" x 12" x 1/2" MONITORING PORT  
14. 12" x 12" x 1/2" MONITORING PORT  
15. 12" x 12" x 1/2" MONITORING PORT  
16. 12" x 12" x 1/2" MONITORING PORT  
17. 12" x 12" x 1/2" MONITORING PORT  
18. 12" x 12" x 1/2" MONITORING PORT  
19. 12" x 12" x 1/2" MONITORING PORT  
20. 12" x 12" x 1/2" MONITORING PORT  
21. 12" x 12" x 1/2" MONITORING PORT  
22. 12" x 12" x 1/2" MONITORING PORT  
23. 12" x 12" x 1/2" MONITORING PORT  
24. 12" x 12" x 1/2" MONITORING PORT  
25. 12" x 12" x 1/2" MONITORING PORT  
26. 12" x 12" x 1/2" MONITORING PORT  
27. 12" x 12" x 1/2" MONITORING PORT  
28. 12" x 12" x 1/2" MONITORING PORT  
29. 12" x 12" x 1/2" MONITORING PORT  
30. 12" x 12" x 1/2" MONITORING PORT  
31. 12" x 12" x 1/2" MONITORING PORT  
32. 12" x 12" x 1/2" MONITORING PORT  
33. 12" x 12" x 1/2" MONITORING PORT  
34. 12" x 12" x 1/2" MONITORING PORT  
35. 12" x 12" x 1/2" MONITORING PORT  
36. 12" x 12" x 1/2" MONITORING PORT  
37. 12" x 12" x 1/2" MONITORING PORT  
38. 12" x 12" x 1/2" MONITORING PORT  
39. 12" x 12" x 1/2" MONITORING PORT  
40. 12" x 12" x 1/2" MONITORING PORT  
41. 12" x 12" x 1/2" MONITORING PORT  
42. 12" x 12" x 1/2" MONITORING PORT  
43. 12" x 12" x 1/2" MONITORING PORT  
44. 12" x 12" x 1/2" MONITORING PORT  
45. 12" x 12" x 1/2" MONITORING PORT  
46. 12" x 12" x 1/2" MONITORING PORT  
47. 12" x 12" x 1/2" MONITORING PORT  
48. 12" x 12" x 1/2" MONITORING PORT  
49. 12" x 12" x 1/2" MONITORING PORT  
50. 12" x 12" x 1/2" MONITORING PORT  
51. 12" x 12" x 1/2" MONITORING PORT  
52. 12" x 12" x 1/2" MONITORING PORT  
53. 12" x 12" x 1/2" MONITORING PORT  
54. 12" x 12" x 1/2" MONITORING PORT  
55. 12" x 12" x 1/2" MONITORING PORT  
56. 12" x 12" x 1/2" MONITORING PORT  
57. 12" x 12" x 1/2" MONITORING PORT  
58. 12" x 12" x 1/2" MONITORING PORT  
59. 12" x 12" x 1/2" MONITORING PORT  
60. 12" x 12" x 1/2" MONITORING PORT  
61. 12" x 12" x 1/2" MONITORING PORT  
62. 12" x 12" x 1/2" MONITORING PORT  
63. 12" x 12" x 1/2" MONITORING PORT  
64. 12" x 12" x 1/2" MONITORING PORT  
65. 12" x 12" x 1/2" MONITORING PORT  
66. 12" x 12" x 1/2" MONITORING PORT  
67. 12" x 12" x 1/2" MONITORING PORT  
68. 12" x 12" x 1/2" MONITORING PORT  
69. 12" x 12" x 1/2" MONITORING PORT  
70. 12" x 12" x 1/2" MONITORING PORT  
71. 12" x 12" x 1/2" MONITORING PORT  
72. 12" x 12" x 1/2" MONITORING PORT  
73. 12" x 12" x 1/2" MONITORING PORT  
74. 12" x 12" x 1/2" MONITORING PORT  
75. 12" x 12" x 1/2" MONITORING PORT  
76. 12" x 12" x 1/2" MONITORING PORT  
77. 12" x 12" x 1/2" MONITORING PORT  
78. 12" x 12" x 1/2" MONITORING PORT  
79. 12" x 12" x 1/2" MONITORING PORT  
80. 12" x 12" x 1/2" MONITORING PORT  
81. 12" x 12" x 1/2" MONITORING PORT  
82. 12" x 12" x 1/2" MONITORING PORT  
83. 12" x 12" x 1/2" MONITORING PORT  
84. 12" x 12" x 1/2" MONITORING PORT  
85. 12" x 12" x 1/2" MONITORING PORT  
86. 12" x 12" x 1/2" MONITORING PORT  
87. 12" x 12" x 1/2" MONITORING PORT  
88. 12" x 12" x 1/2" MONITORING PORT  
89. 12" x 12" x 1/2" MONITORING PORT  
90. 12" x 12" x 1/2" MONITORING PORT  
91. 12" x 12" x 1/2" MONITORING PORT  
92. 12" x 12" x 1/2" MONITORING PORT  
93. 12" x 12" x 1/2" MONITORING PORT  
94. 12" x 12" x 1/2" MONITORING PORT  
95. 12" x 12" x 1/2" MONITORING PORT  
96. 12" x 12" x 1/2" MONITORING PORT  
97. 12" x 12" x 1/2" MONITORING PORT  
98. 12" x 12" x 1/2" MONITORING PORT  
99. 12" x 12" x 1/2" MONITORING PORT  
100. 12" x 12" x 1/2" MONITORING PORT  
101. 12" x 12" x 1/2" MONITORING PORT  
102. 12" x 12" x 1/2" MONITORING PORT  
103. 12" x 12" x 1/2" MONITORING PORT  
104. 12" x 12" x 1/2" MONITORING PORT  
105. 12" x 12" x 1/2" MONITORING PORT  
106. 12" x 12" x 1/2" MONITORING PORT  
107. 12" x 12" x 1/2" MONITORING PORT  
108. 12" x 12" x 1/2" MONITORING PORT  
109. 12" x 12" x 1/2" MONITORING PORT  
110. 12" x 12" x 1/2" MONITORING PORT  
111. 12" x 12" x 1/2" MONITORING PORT  
112. 12" x 12" x 1/2" MONITORING PORT  
113. 12" x 12" x 1/2" MONITORING PORT  
114. 12" x 12" x 1/2" MONITORING PORT  
115. 12" x 12" x 1/2" MONITORING PORT  
116. 12" x 12" x 1/2" MONITORING PORT  
117. 12" x 12" x 1/2" MONITORING PORT  
118. 12" x 12" x 1/2" MONITORING PORT  
119. 12" x 12" x 1/2" MONITORING PORT  
120. 12" x 12" x 1/2" MONITORING PORT  
121. 12" x 12" x 1/2" MONITORING PORT  
122. 12" x 12" x 1/2" MONITORING PORT  
123. 12" x 1



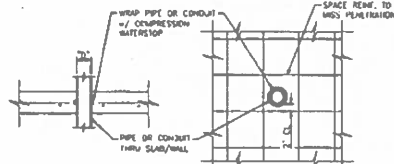




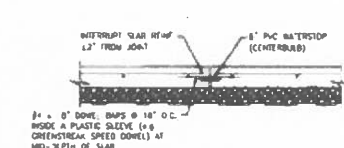
TYP. SLAB CONTROL JOINT DETAIL  
SCALE: NEAR



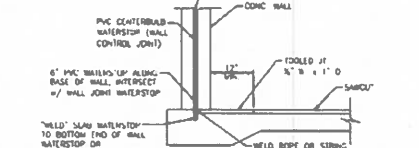
TYP. WALL CONTROL/CONSTRUCTION JOINT DETAIL  
SCALE: NEAR



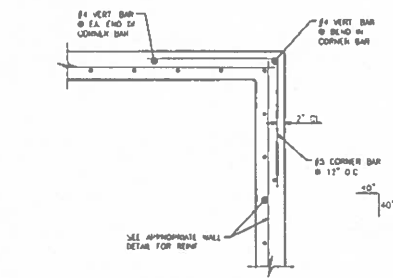
TYP. SLAB/WALL PENETRATION DETAIL (D ≤ 8")  
SCALE: NEAR



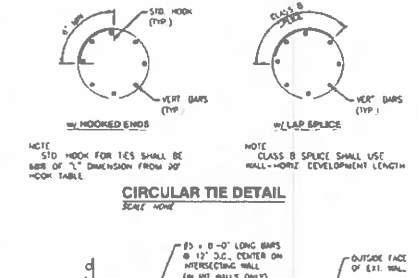
TYP. SLAB CONSTRUCTION JOINT DETAIL  
SCALE: NEAR



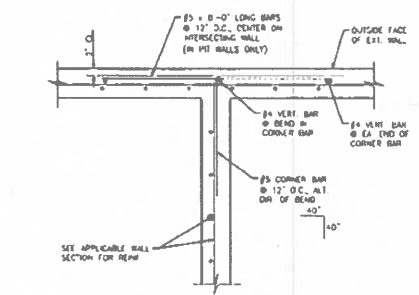
WATERSTOP DETAIL (SLAB-WALL INTERFACE)  
SCALE: NEAR



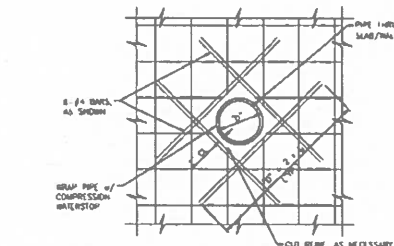
WALL CORNER DETAIL  
SCALE: NEAR



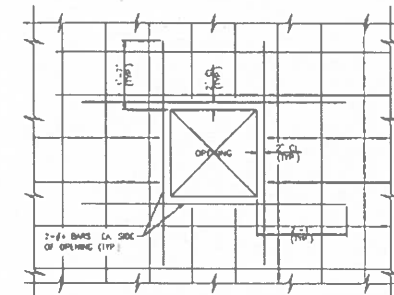
CIRCULAR TIE DETAIL  
SCALE: NEAR



WALL INTERSECTION DETAIL  
SCALE: NEAR



TYP. SLAB/WALL PENETRATION DETAIL (D > 8")  
SCALE: NEAR



TYP. RECTANGULAR PENETRATION DETAIL  
SCALE: NEAR

DEVELOPMENT LENGTH, $l_d$ *			
BAR SIZE	HORIZONTAL		VERTICAL
	<12" BELOW	>12" BELOW	
#3	15"	18"	15"
#4	18"	25"	18"
#5	24"	31"	24"
#6	29"	37"	29"
#7	42"	54"	42"
#8	48"	62"	48"
#9	54"	70"	54"

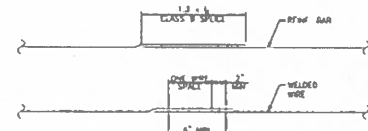
\* 4000psi+ CONCRETE

REINFORCEMENT BAR DEVELOPMENT LENGTH  
SCALE: NEAR

CLASS B SPLICE (1.3 x $l_d$ ) *			
BAR SIZE	HORIZONTAL		VERTICAL
	<12" BELOW	>12" BELOW	
#3	15"	25"	9"
#4	25"	31"	25"
#5	31"	40"	31"
#6	37"	48"	37"
#7	54"	70"	54"
#8	62"	80"	62"
#9	70"	91"	70"

\* 4000psi+ CONCRETE

CLASS B SPLICE LENGTHS  
SCALE: NEAR



TYP. LAP SPLICE LENGTHS  
SCALE: NEAR

90° HOOK DIMENSIONS			
BAR SIZE	"L"	"TYPED"	"TYPED"
#3	6"	6"	6"
#4	8"	8"	8"
#5	10"	10"	10"
#6	12"	12"	12"
#7	14"	14"	14"
#8	16"	16"	16"
#9	18"	18"	18"

\* 4000psi+ CONCRETE

TYP. 90° (STANDARD) HOOK  
SCALE: NEAR

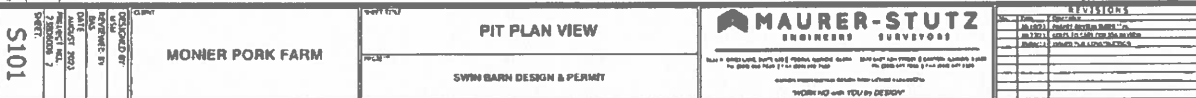
**MAURER-STUTZ**  
ENGINEERS

GENERAL STRUCTURAL DETAILS

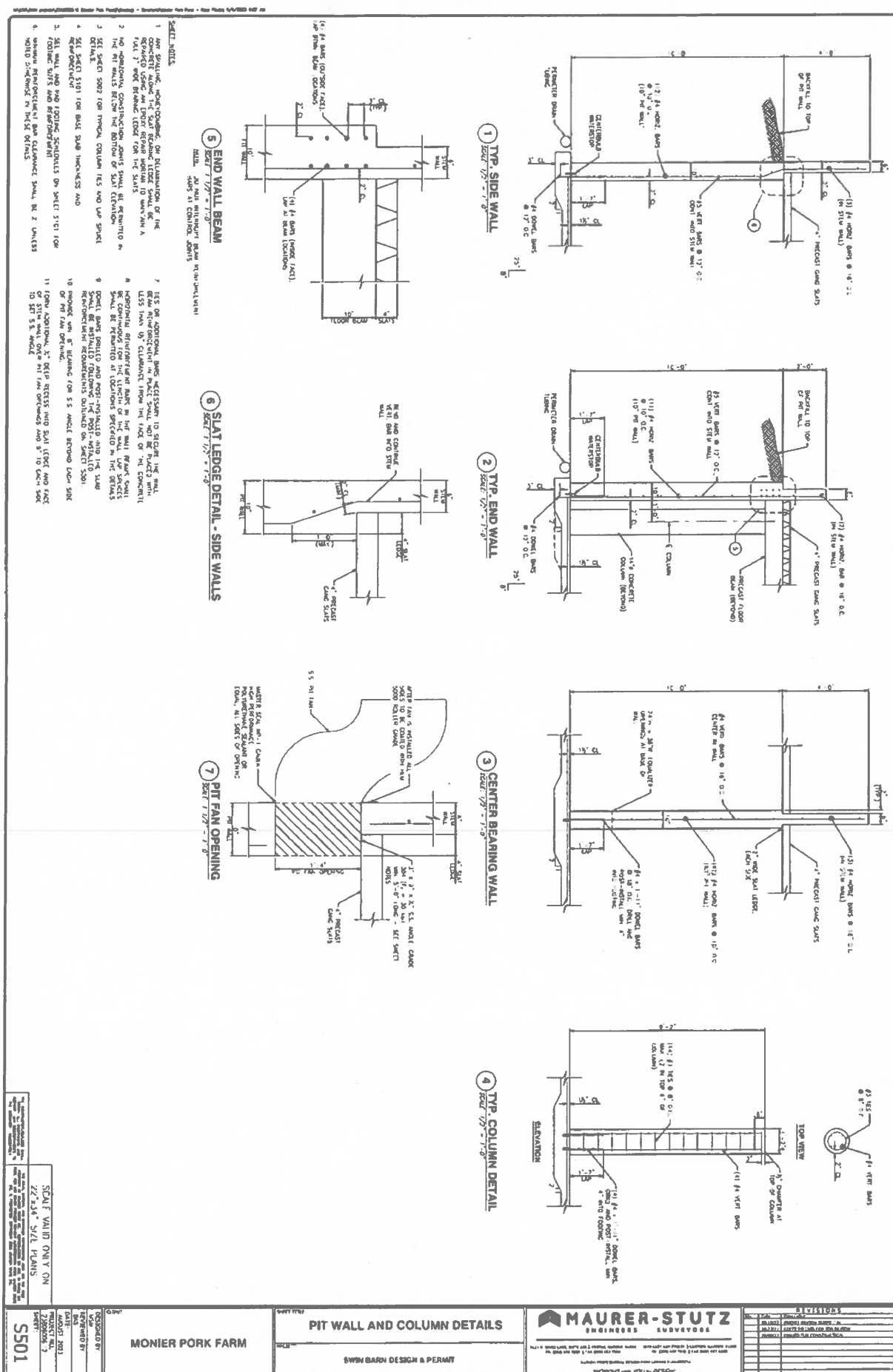
MONIER PORK FARM

DESIGNED BY  
REVIEWED BY  
DATE  
PROJECT NO.  
SHEET: 5002











- 1 The PLAYBOY SLAB and SLIDE are made of POLYMER MODIFIED ASPHALT with the BEST of SUPERABSORBENT BLUE with the ADDED BENEFIT of NO WEAR.
- 2 BATHING and 3 CLEANING FROM ENDS OF IMPROVED SURFING BOARDS are THE FORMER TASK OF CONCRETE WALLS.
- 3 CONTINUOUSLY ABOUT THE RECEIVED SLAB and WATER WITH THE SLAB REPOREMENT FOR THE USE SPACE OFFICE, ON SHEET 2007.

25004004 2  
SW27  
S505

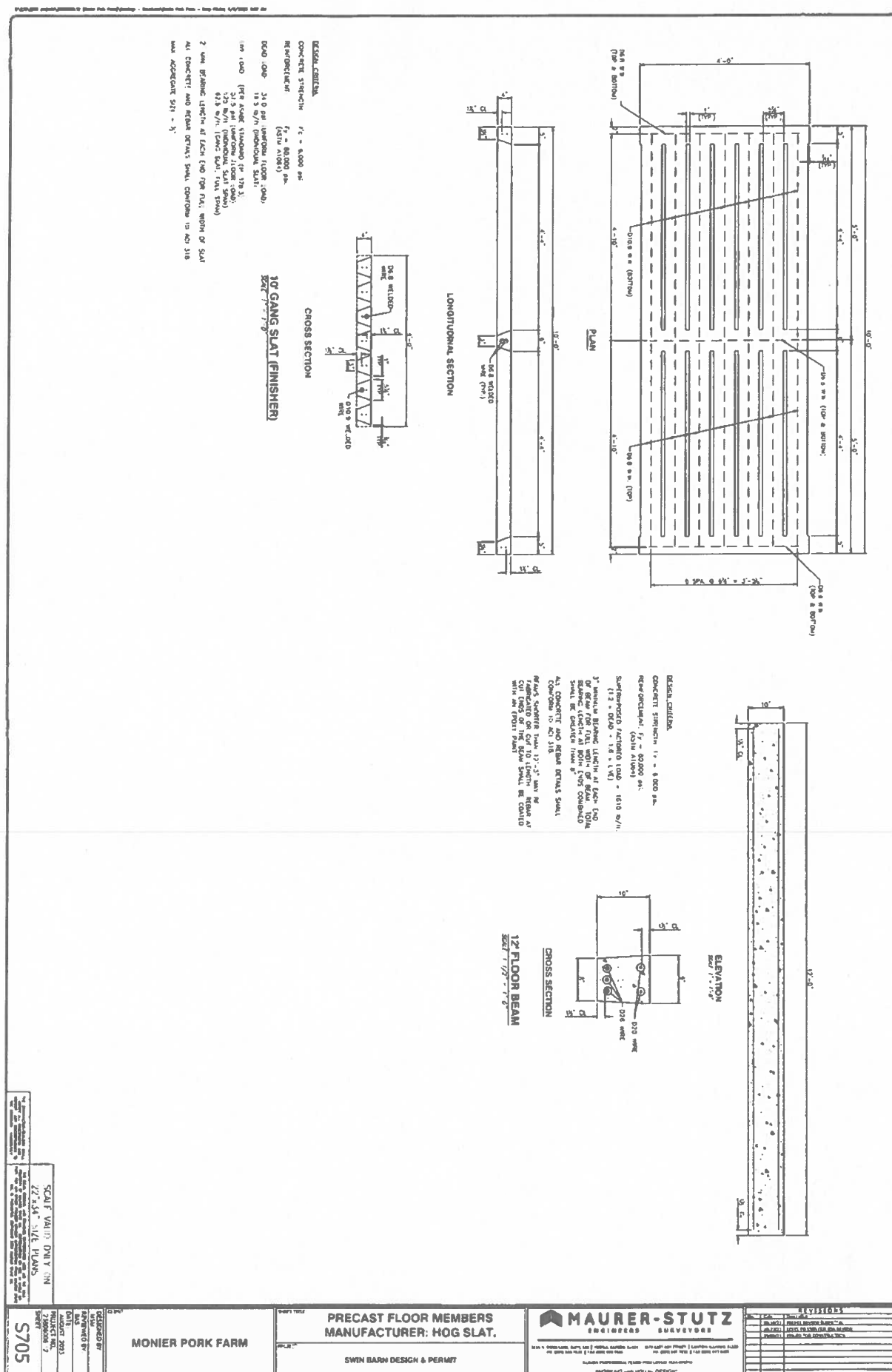
### SWIN BARN DESIGN & PERMIT

**MONIER PORK FARM**



**MAURER-STUTZ**  
ENGINEERS SURVIVORS

REVISIONS	
NO.	DESCRIPTION
1011021	REPLACE DOWEL BOLT - R
1011022	REPLACE DOOR LATCH AND KEY
1011023	REPLACE THE LATCH AND KEY



STATE OF ILLINOIS

COUNTY OF SANGAMON

)  
)  
)  
)  
)

**CERTIFICATE OF SERVICE**

I, the undersigned attorney at law, hereby certify that I have served on the date of July 9, 2025, the attached **NOTICE**, **APPEARANCE** and **RECOMMENDATION OF THE ILLINOIS ENVIRONMENTAL PROTECTION AGENCY**, upon the following persons by causing to be mailed a true copy thereof in an envelope duly addressed, bearing proper first class postage, and deposited in the United States mail at Springfield, Illinois:

Monier Pork Farm  
Stacy Mueller  
23228 2300 North Ave.  
Oakwood, Illinois 60953

**Copies also provided electronically as follows:**

Illinois Department of Revenue  
via email at REV.PropTaxApp@illinois.gov  
101 West Jefferson  
P.O. Box 19033  
Springfield, Illinois 62794

**[Electronic Filing]**

Clerk  
Illinois Pollution Control Board  
60 E. Van Buren St., Ste. 630  
Chicago, Illinois 60605

ILLINOIS ENVIRONMENTAL PROTECTION AGENCY

/s/ Gabriel Neibergall  
Assistant Counsel  
Division of Legal Counsel  
2520 W Iles Ave.  
P.O. Box 19276  
Springfield, Illinois 62794-9276  
217.782.5544  
217.782.9143 (TDD)